



HYDRAULICKÉ SCHÉMATA
ZAPOJENÍ KOTLŮ NA BIOMASU
ATTACK®



*Varianty zapojení
kotlů na biomasu:*

ATTACK® WOOD&PELLET

ATTACK® PELLET

ATTACK® SLX

ATTACK® DPX

ATTACK® DP

ATTACK® FD Automat

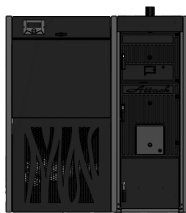


WWW.ATTACK.CZ

LEGENDA



Kotel řady:
DP
DPX
SLX
PELLET
WOOD & PELLET



Kotel řady:
FDA



Kotel řady:
PELLET



Automatický kotel



Akumulační nádrž AK



Akumulační nádrž AS



Akumulační nádrž HR



Akumulační nádrž HRS

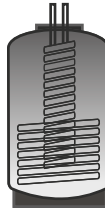
OBSAH

LEGENDA	2 – 3
ATTACK-OVENTROP, ATTACK-LADDOMAT	4
ATTACK AK	5 – 7
ATTACK AS	8
ATTACK AK BIVALENT	9
ATTACK AK 2x	10
ATTACK HR	11

LEGENDA



Akumulační nádrž TUV



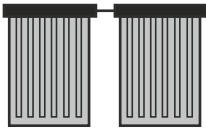
Akumulační nádrž TUVS



Nádrž na TUV



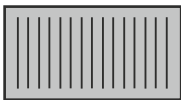
Bivalentní nádrž na TUV



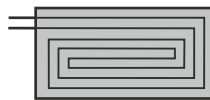
Solární panely



Expanzní nádrž



Radiátorový topný okruh



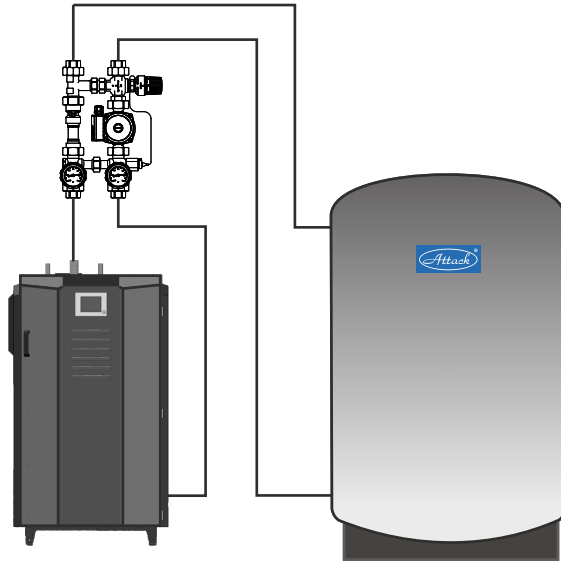
Podlahový topný okruh



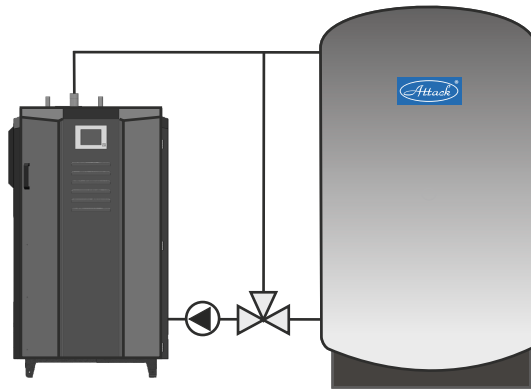
Anuloid

ATTACK HRS	12
ATTACK HRS + ATTACK AK	13
ATTACK TUV	14
ATTACK TUVS	15
ATTACK FD Automat + ATTACK AK	16
ATTACK FD Automat + ATTACK AS	17
ATTACK FD Automat	18 – 20
ATTACK PELLET 30 AUTOMATIC Plus	21 – 23

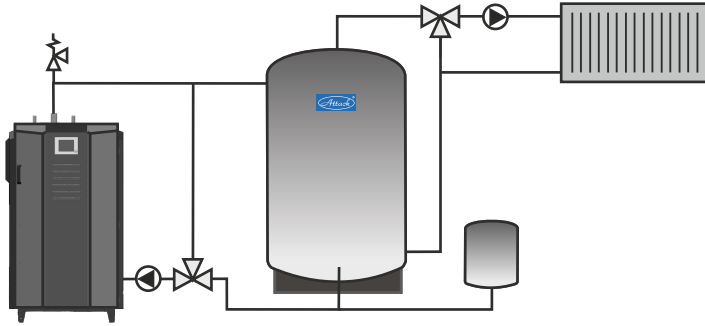
ATTACK-OVENTROP



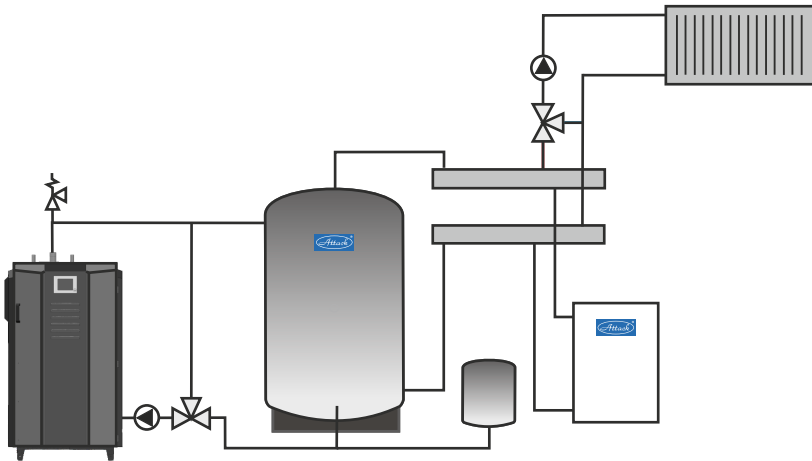
ATTACK-LADDOMAT



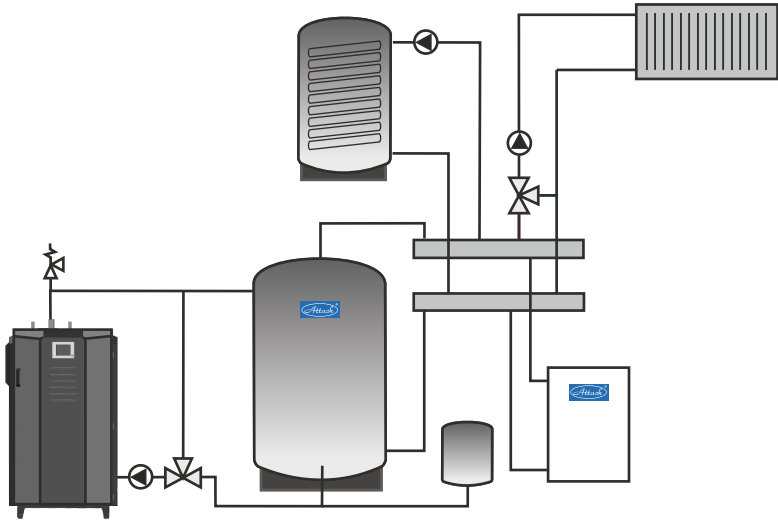
1. ATTACK AK



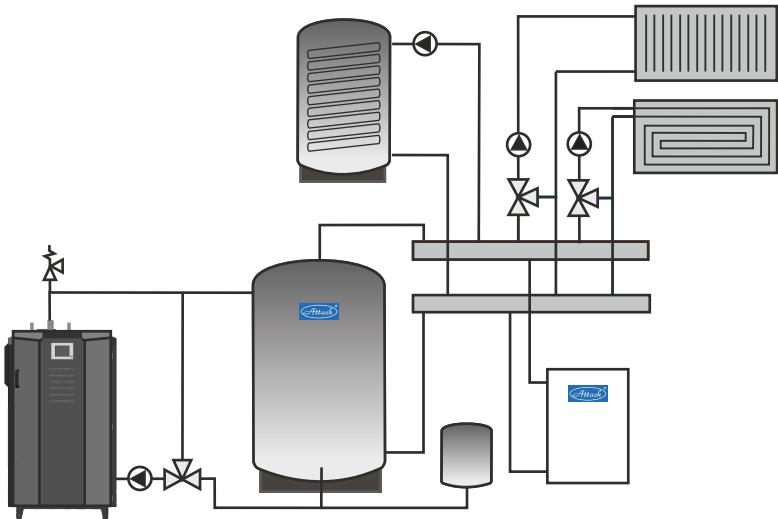
2. ATTACK AK



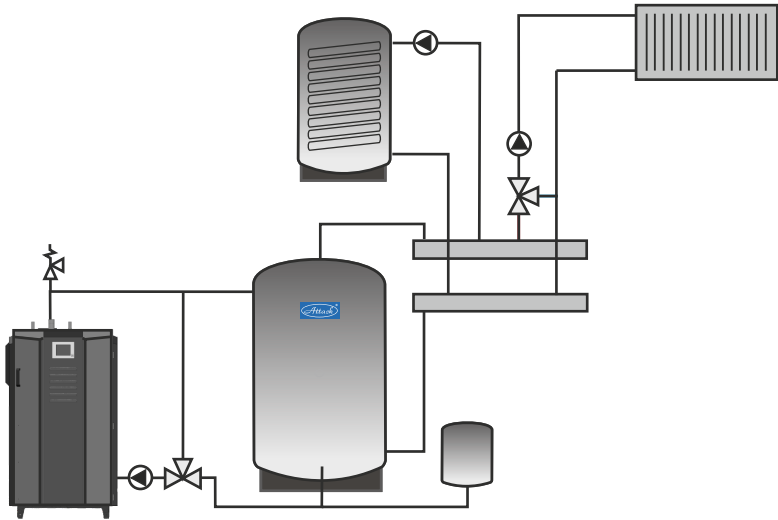
3. ATTACK AK



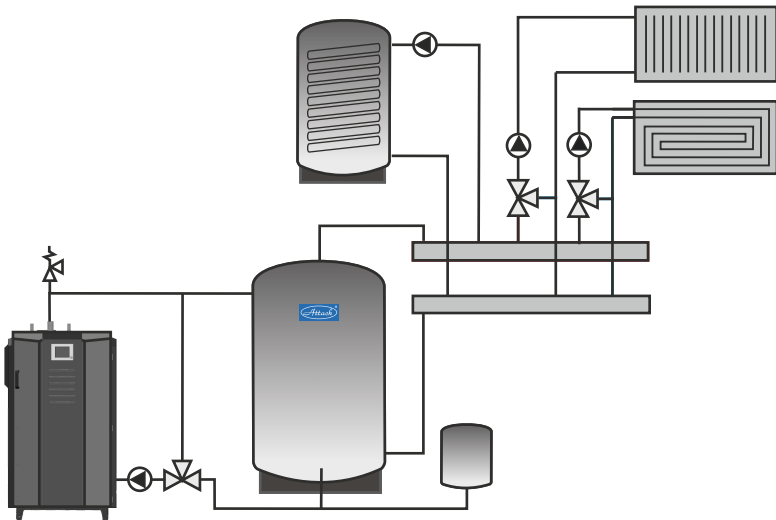
4. ATTACK AK



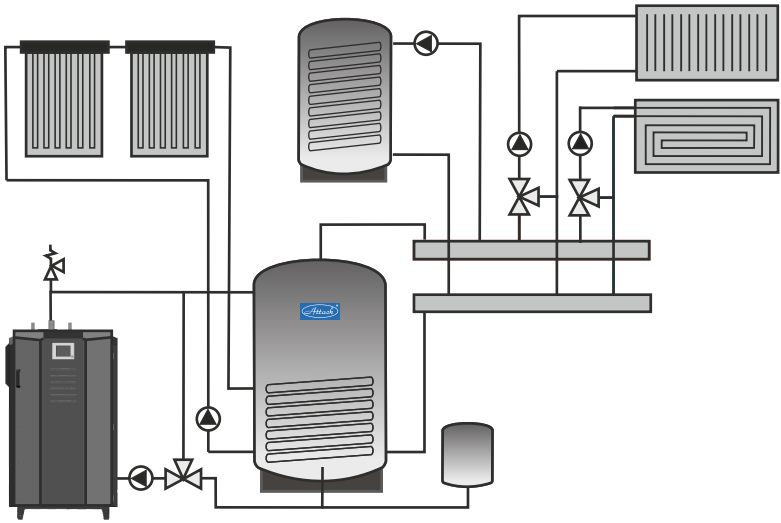
5. ATTACK AK



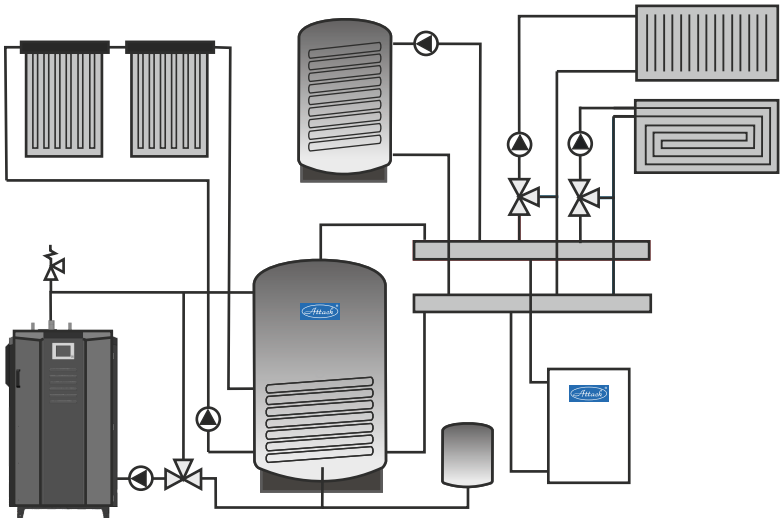
6. ATTACK AK



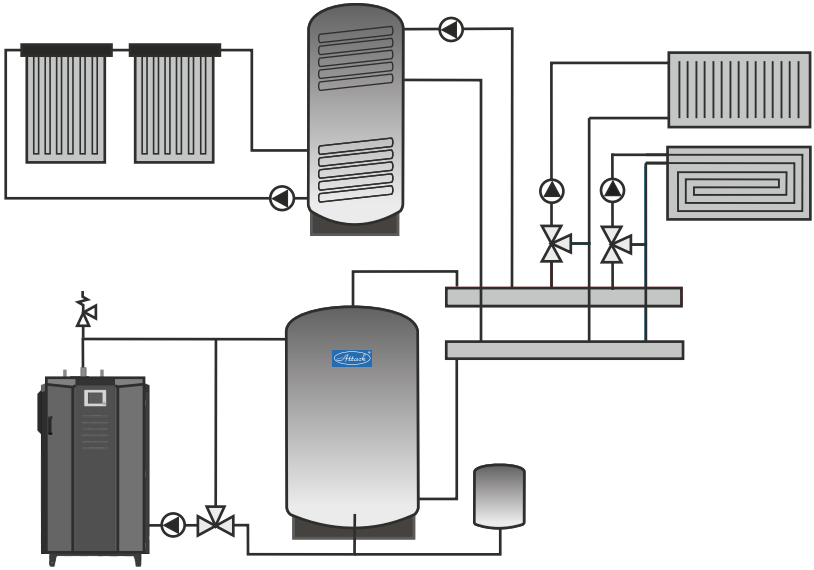
7. ATTACK AS



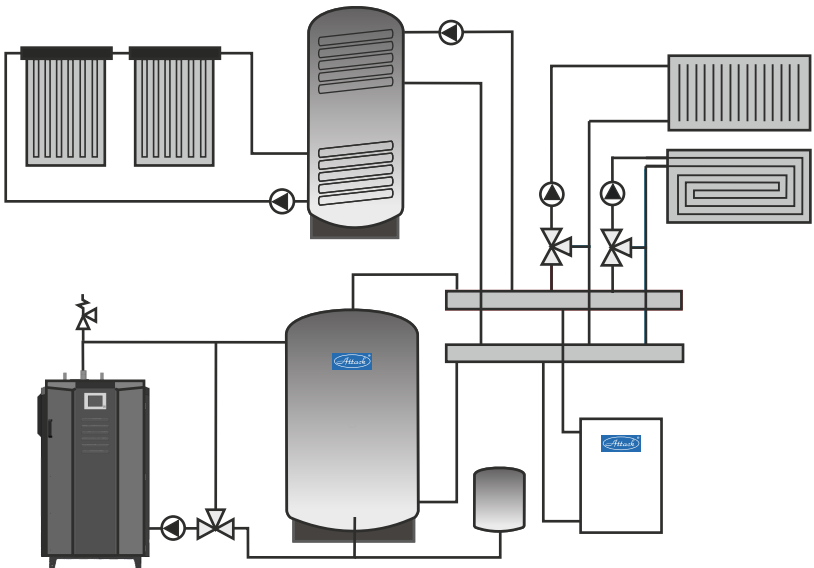
8. ATTACK AS



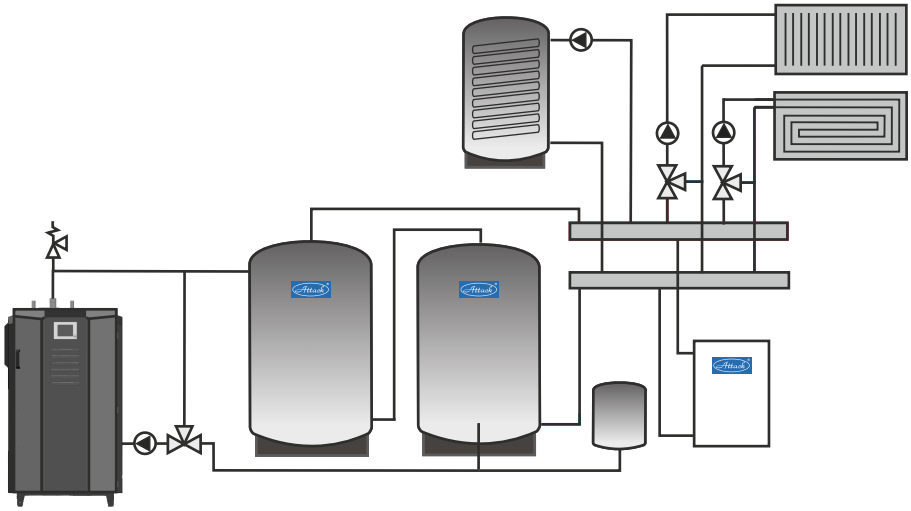
9. ATTACK AK BIVALENT



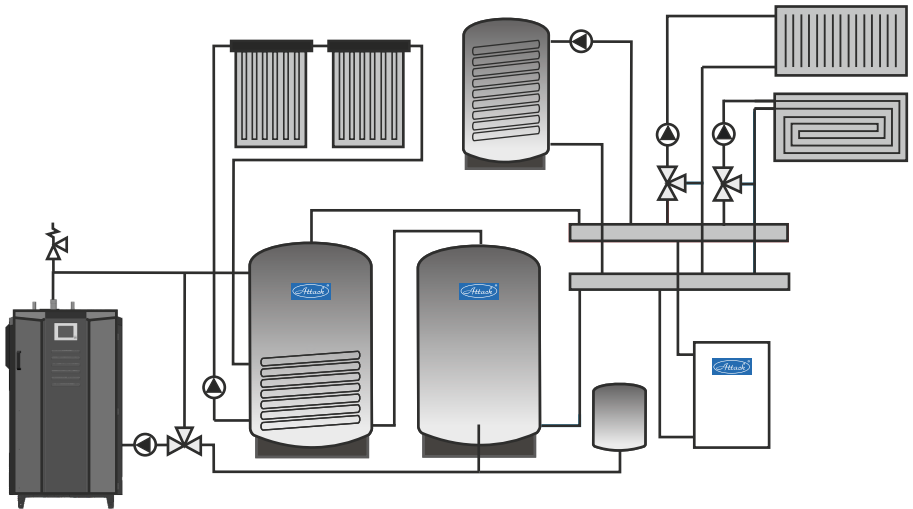
10. ATTACK AK BIVALENT



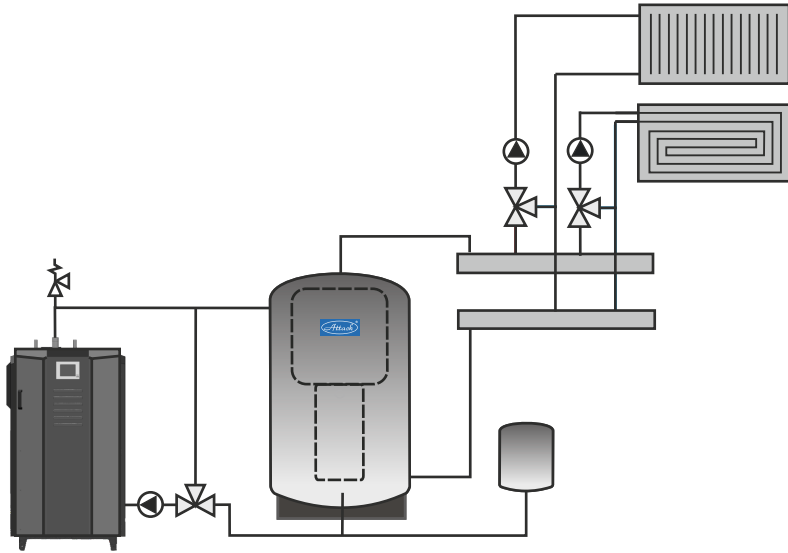
11. ATTACK AK 2x



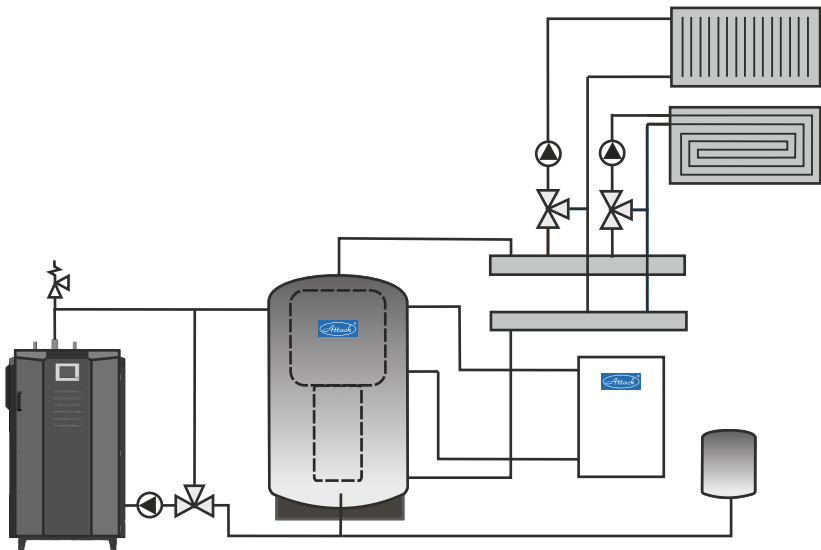
12. ATTACK AK 2x



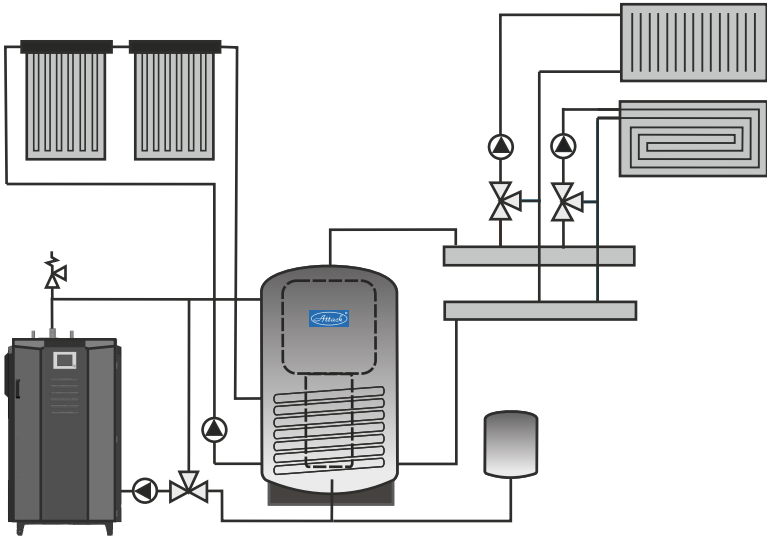
13. ATTACK HR



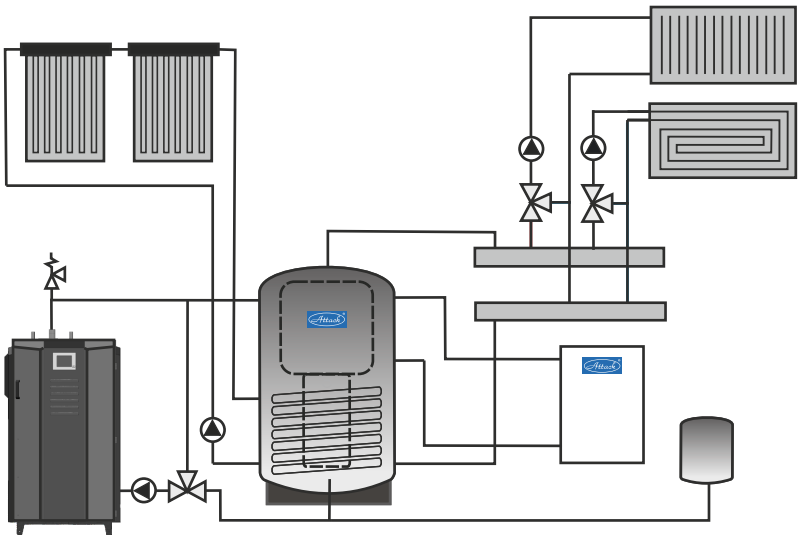
14. ATTACK HR



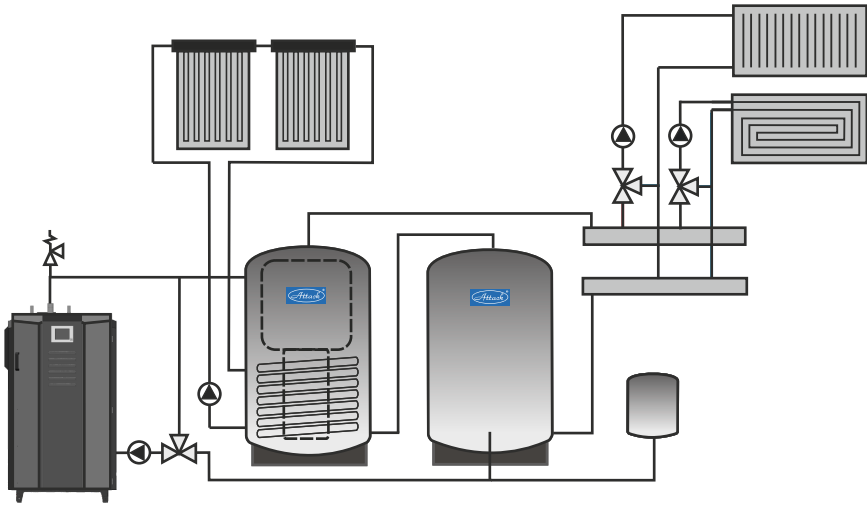
15. ATTACK HRS



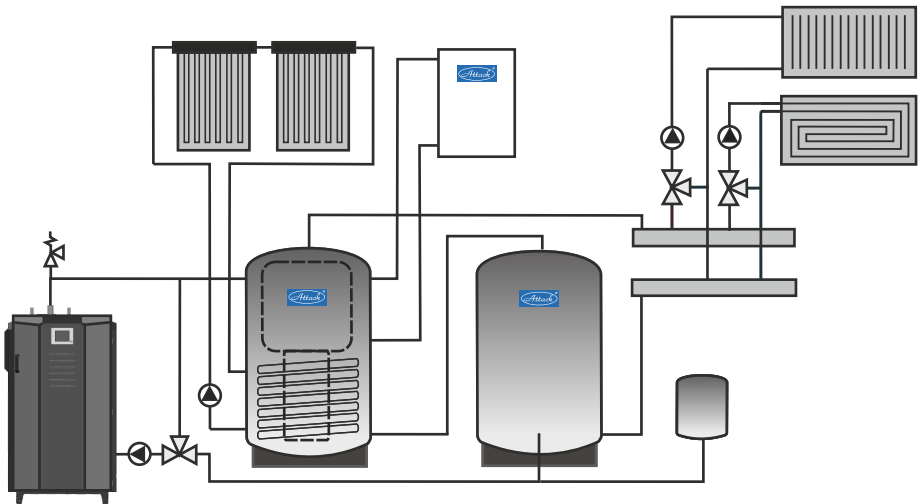
16. ATTACK HRS



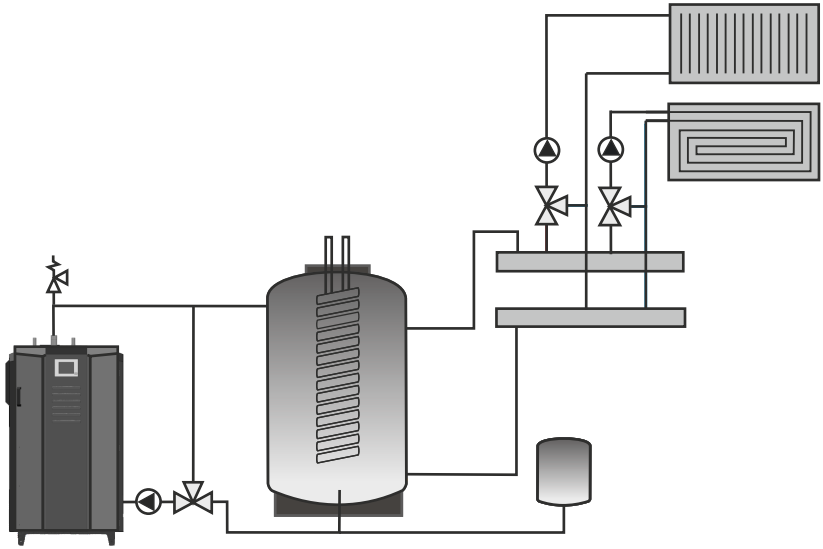
17. ATTACK HRS + ATTACK AK



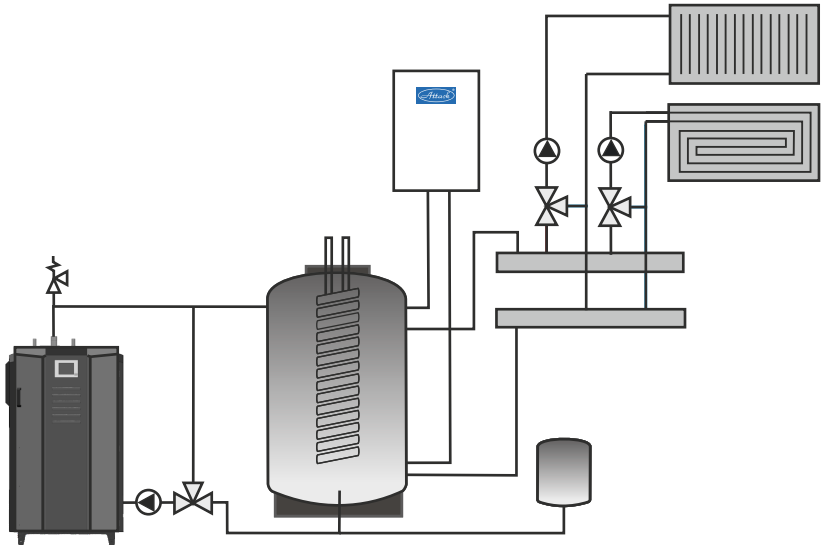
18. ATTACK HRS + ATTACK AK



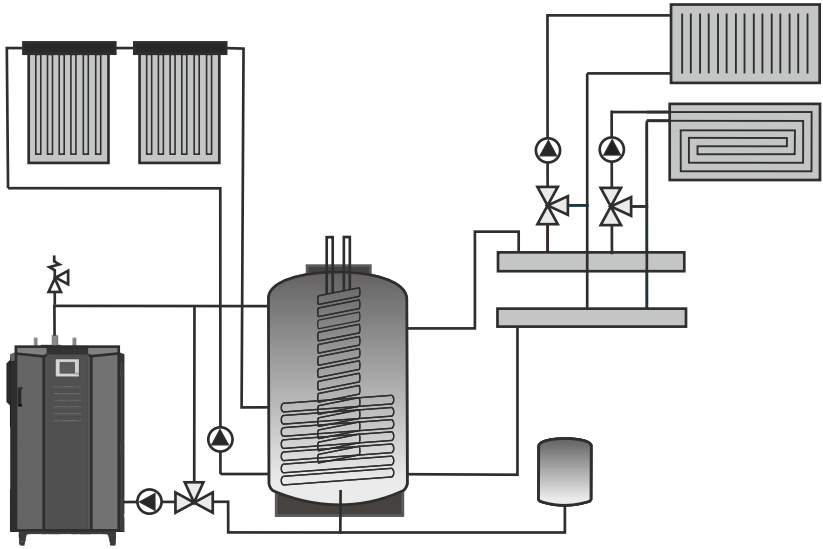
19. ATTACK TUV



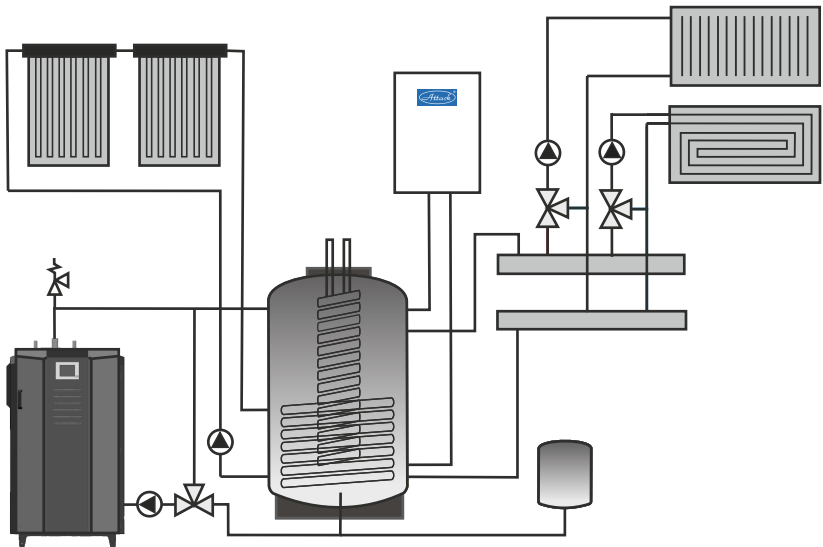
20. ATTACK TUV



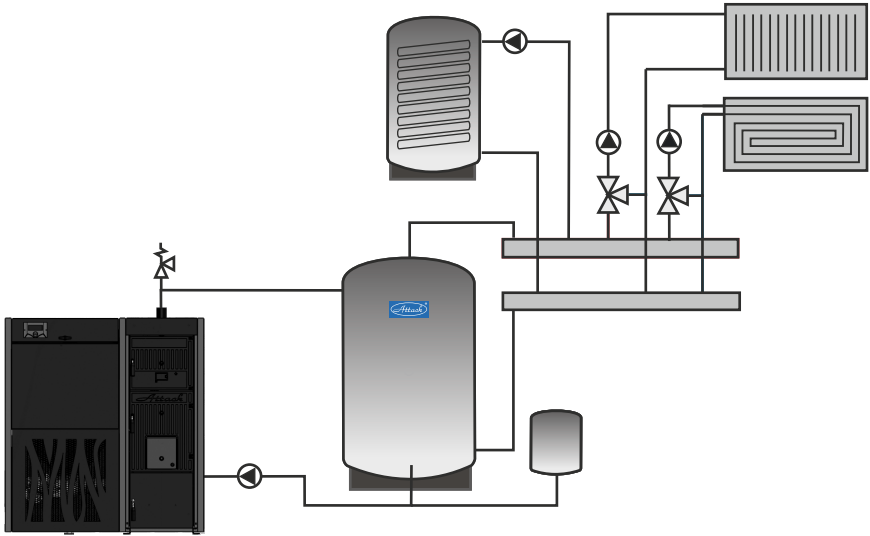
21. ATTACK TUVS



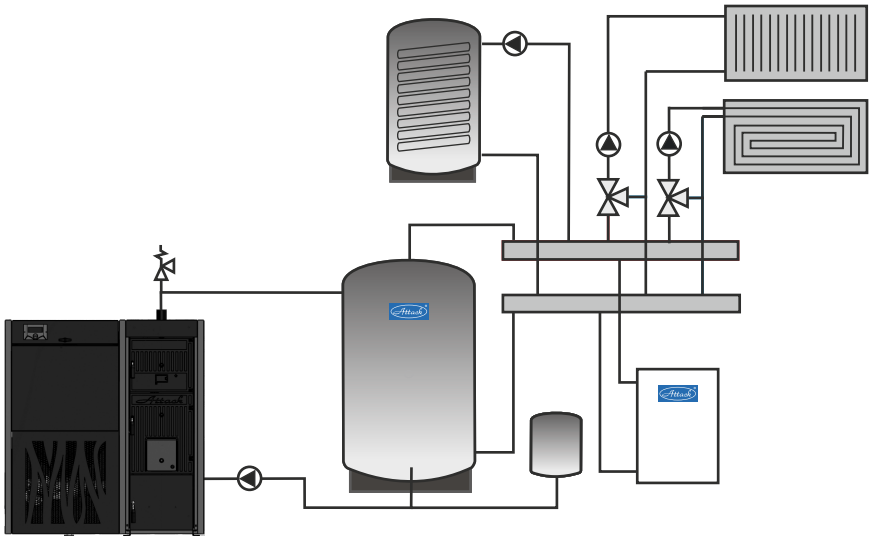
22. ATTACK TUVS



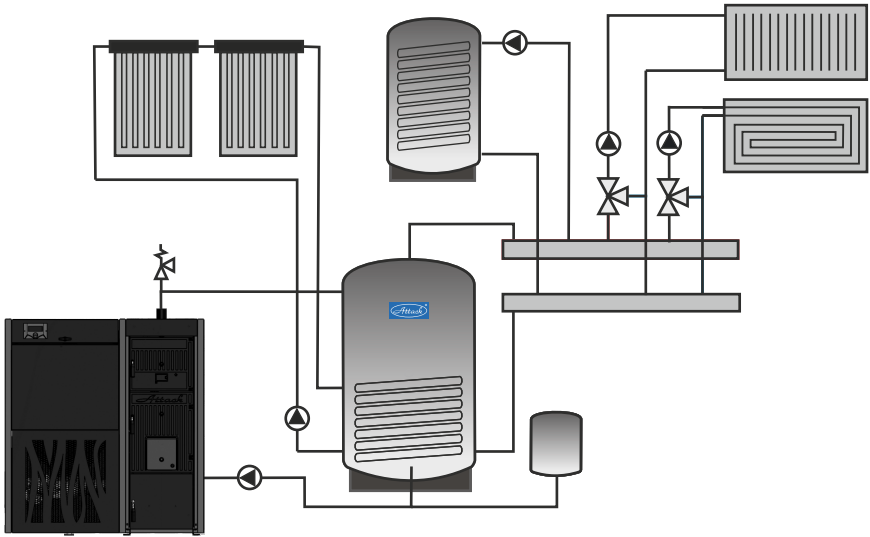
23. ATTACK FD Automat + ATTACK AK



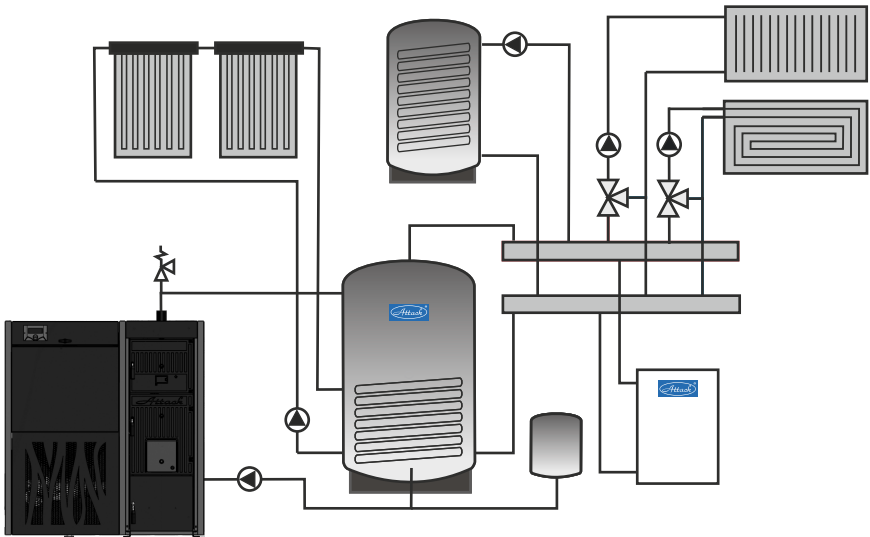
24. ATTACK FD Automat + ATTACK AK



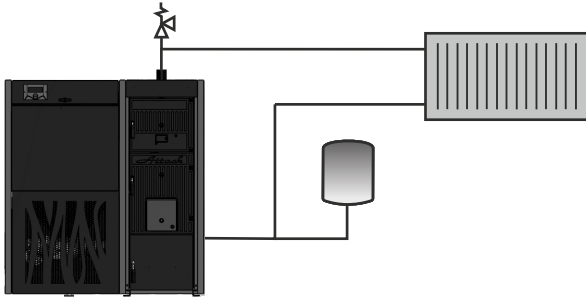
25. ATTACK FD Automat + ATTACK AS



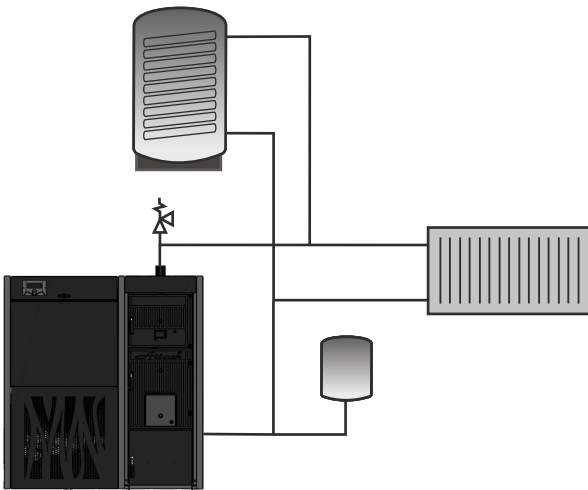
26. ATTACK FD Automat + ATTACK AS



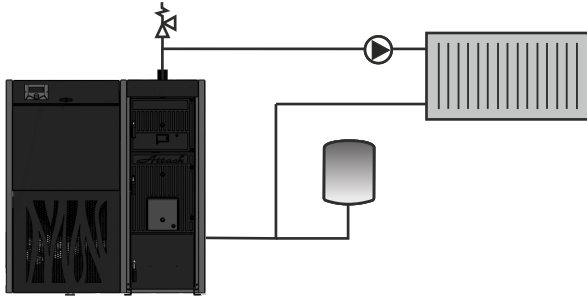
27. ATTACK FD Automat



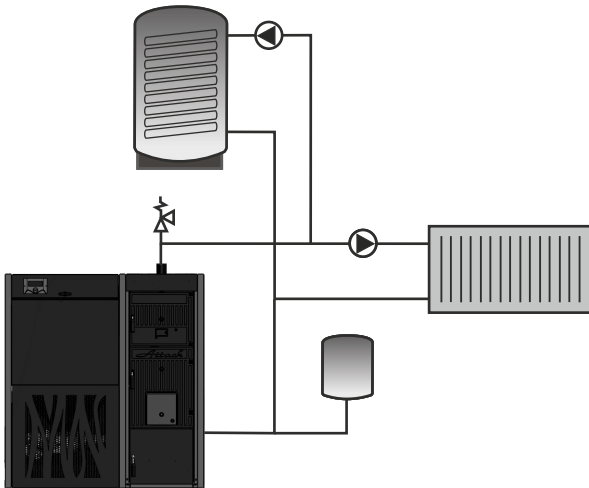
28. ATTACK FD Automat



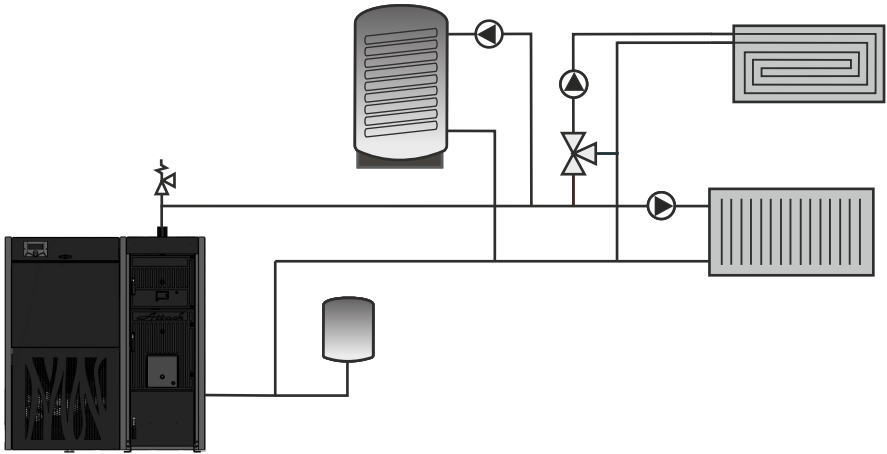
29. ATTACK FD Automat



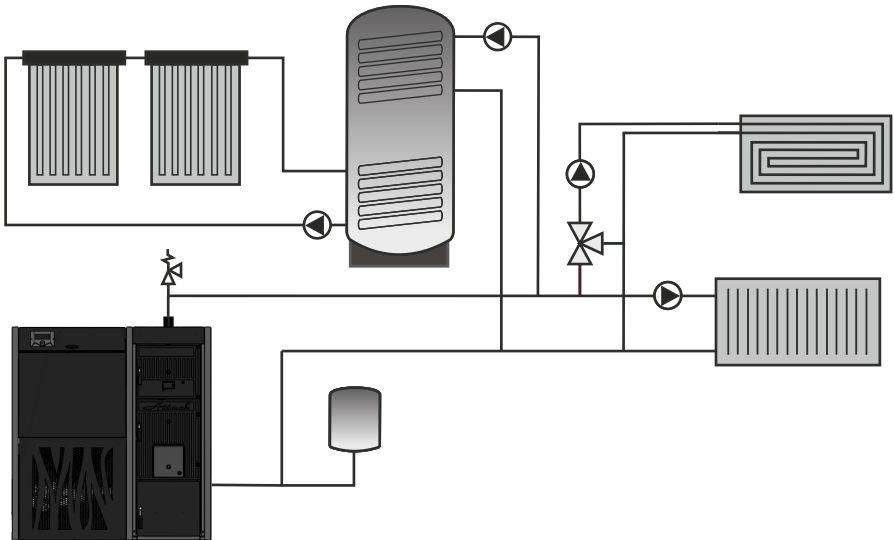
30. ATTACK FD Automat



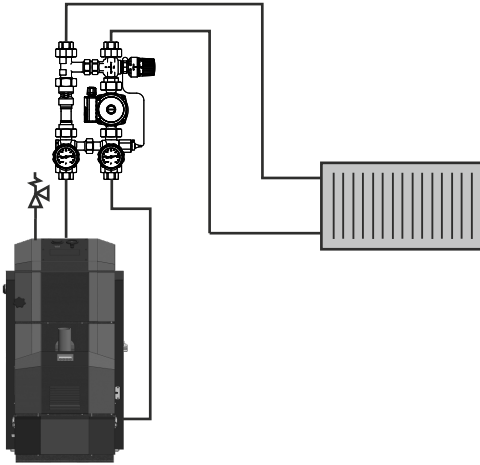
31. ATTACK FD Automat



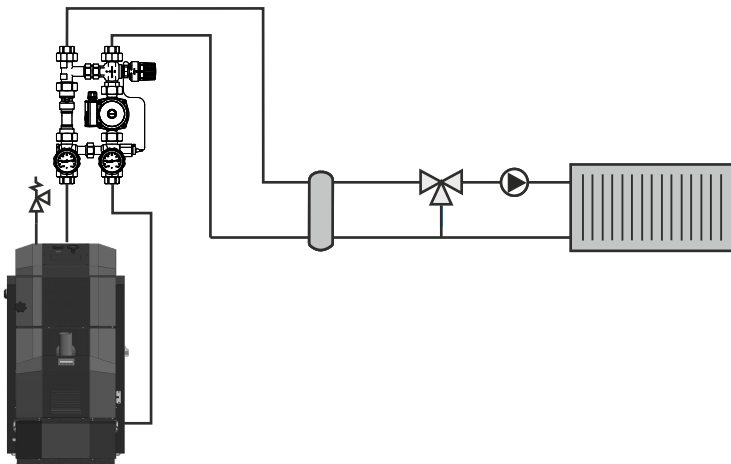
32. ATTACK FD Automat



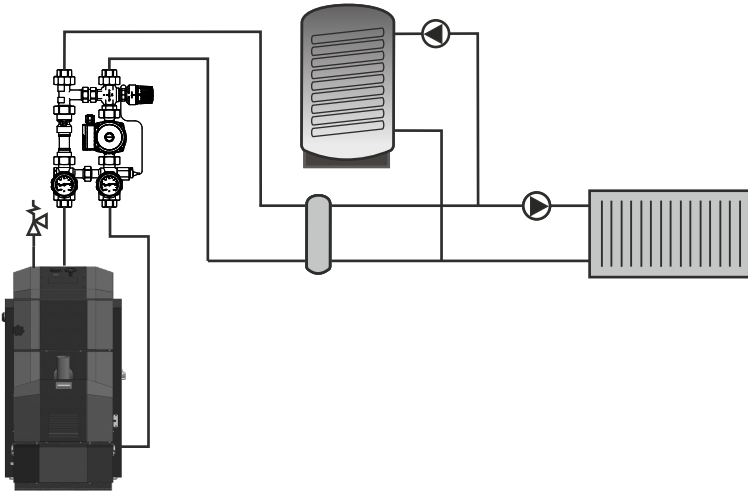
33. ATTACK PELLET 30 AUTOMATIC Plus



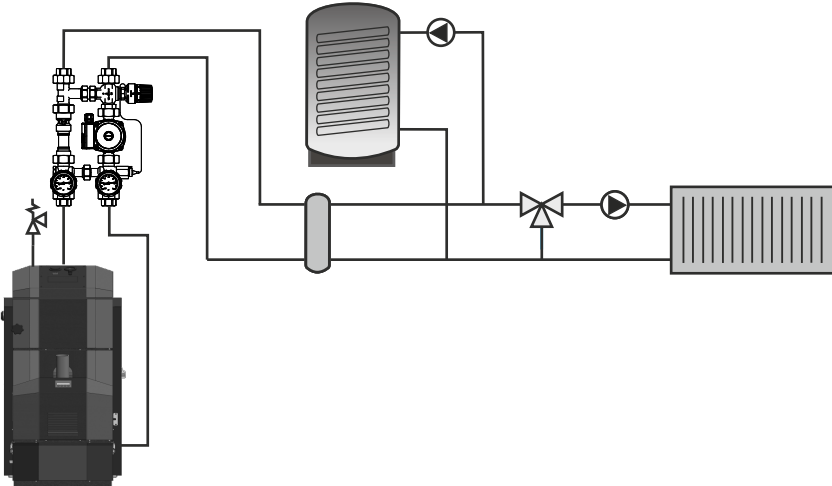
34. ATTACK PELLET 30 AUTOMATIC Plus



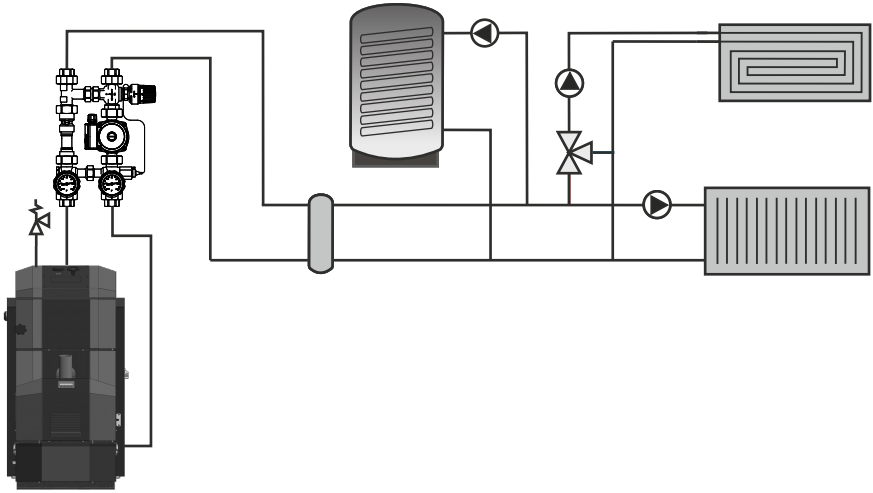
35. ATTACK PELLELET 30 AUTOMATIC Plus



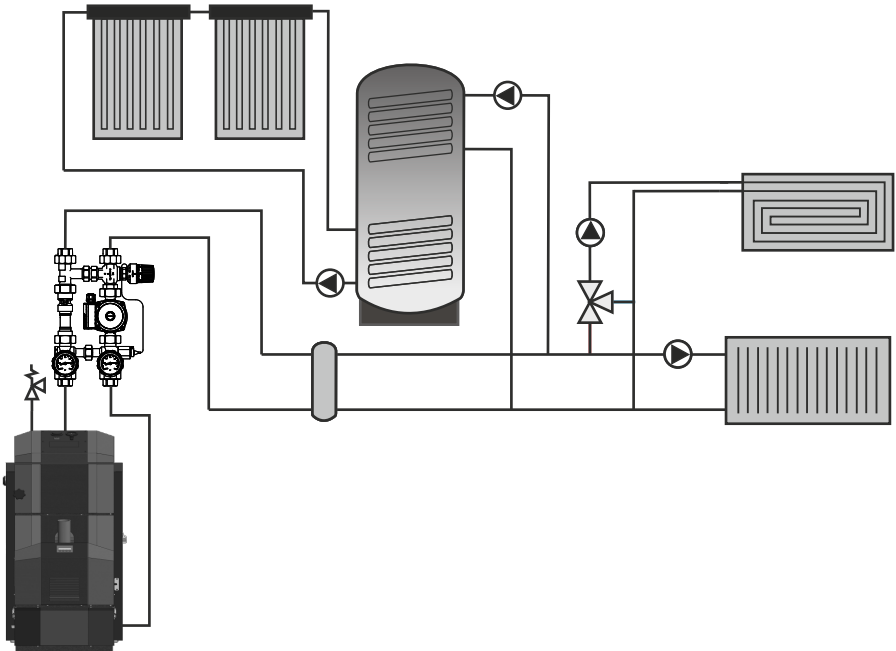
36. ATTACK PELLELET 30 AUTOMATIC Plus



37. ATTACK PELLET 30 AUTOMATIC Plus



38. ATTACK PELLET 30 AUTOMATIC Plus





ATTACK heating CZ, s.r.o.
Cukrovarská 498/13
682 01 Vyškov
Česká republika

Tel: +420 727 935 225
E-mail: kotle@attack.cz
obchod@attack.cz
Web: www.attack.cz



Výrobce ATTACK, s.r.o. si vyhrazuje právo technických změn výrobků bez předchozího upozornění. • ATTACK, s.r.o. producer reserves the right to change technical parameters and dimensions of boilers without previous warning. • Der Hersteller ATTACK, s.r.o. behält sich das Recht der technischen Veränderungen an Produkten ohne eine vorige Warnung. • Изготовитель ATTACK, s.r.o. оставляет за собой право изменения технических параметров и размеров котла без предыдущего предупреждения. • Le producteur ATTACK, s.r.o. réserve le droit des modifications techniques sans l'avertissement précédent. • Productor ATTACK, s.r.o. reserva el derecho de cambios técnicos sin advertencia anterior.

